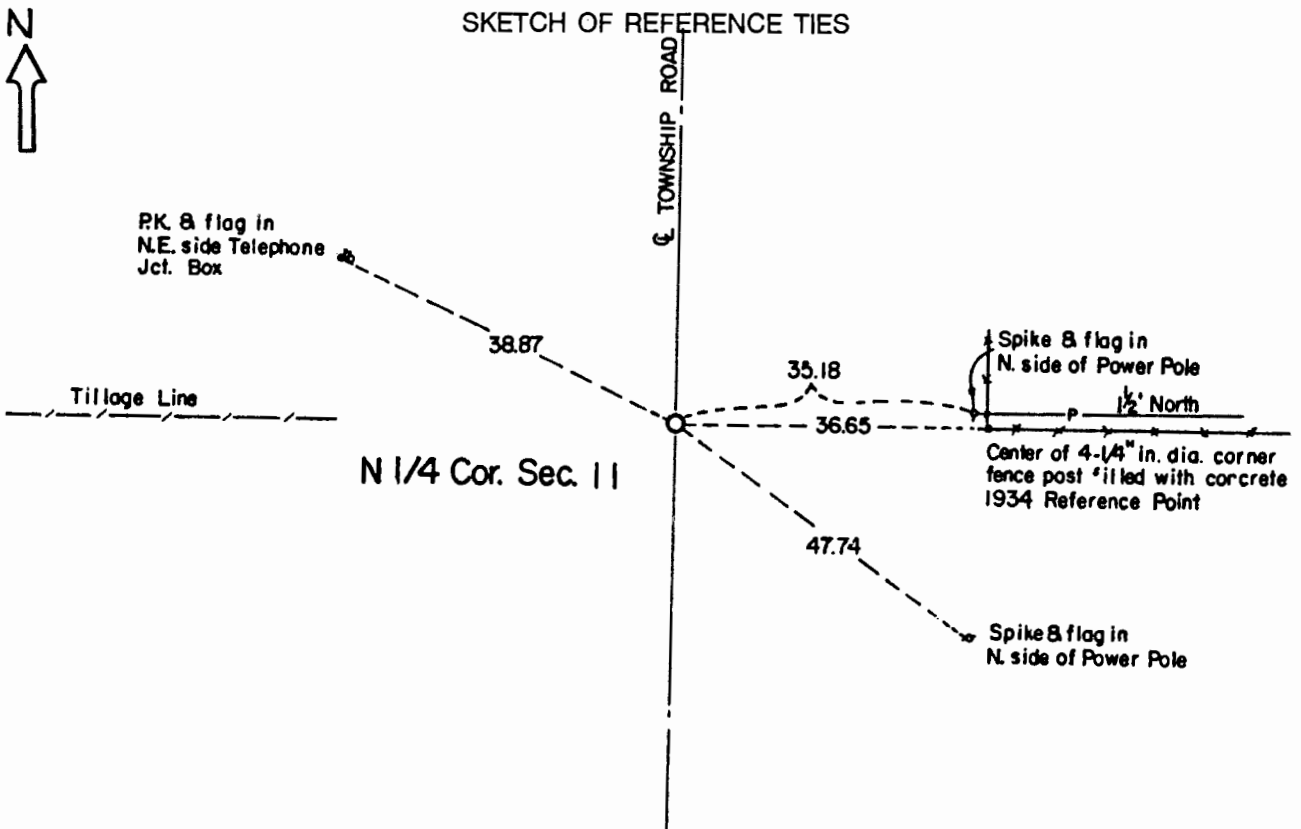


CERTIFICATE OF LOCATION OF GOVERNMENT CORNER

North Quarter Corner of Section **11** , Township **107** , Range **41** 5th P.M.
STATE OF MINNESOTA, County of Murray.

Statement: June 9, 1989 - Found two field stones. Lowered the monument and placed a Minnesota Department of Transportation Cast Iron Monument at the road surface.



Statement of evidence relative to this corner location is on the back of page.

I hereby certify that this document and the data contained herein was prepared by me or under my direct supervision and that I am a duly Registered Land Surveyor under the laws of the State of Minnesota.

Duane A. Bonnema
Duane A. Bonnema

Nov 4, 1989
Date

Minnesota Registration No. 14895

OFFICE OF THE COUNTY RECORDER
COUNTY OF MURRAY **NOV 15 1989**

I hereby certify that this document was filed in the County Recorder's office at ___M. on the ___ day of _____ A.D., 19__

County Recorder *James W. Johnson*

By _____, Deputy
DOCUMENT NO. _____

North Quarter Cor. Sec. 11 T107N-R41W

Statement:

- August 1861 Original Government Land Office Surveyor L. G. M. Fletcher records in his field notes, "built mound with trench pits, charred stake, per instructions."*
- May 14, 1901 J. W. Woolstencroft, County Surveyor, records in the County Surveyor's Record Book, page 132, that he measured to the Corner while doing survey work in Section 2. He does not state what type of Monument was at the Corner.*
- 1934 F. A. March, County Surveyor, records in the County Surveyor's Record Book, page 409, "Found stone" and also established witness ties to the Corner while doing survey work in Section 11.*
- June 9, 1989 Duane A. Bonnema, LS Reg. No. 14895, using one of the 1934 witness tie points, located a 3 inch x 8 inch x 16 inch stone which was 3/4 foot below the road surface. A 6 inch x 11 inch x 18 inch stone was found directly below the first stone at a depth of 2 feet below the surface. Original topsoil is at a depth of 1 foot below the road surface. A hole was dug 3 1/2 feet deep and no additional evidence was discovered. The 2 stone monuments were lowered and a Minnesota Department of Transportation Cast Iron Monument was placed at the road surface.*